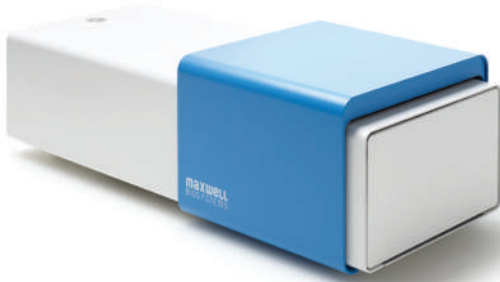


# MaxTwo

High-Throughput  
High Resolution  
Functional Imaging



### MaxTwo Mainframe



#### Mainframe and Data Transfer

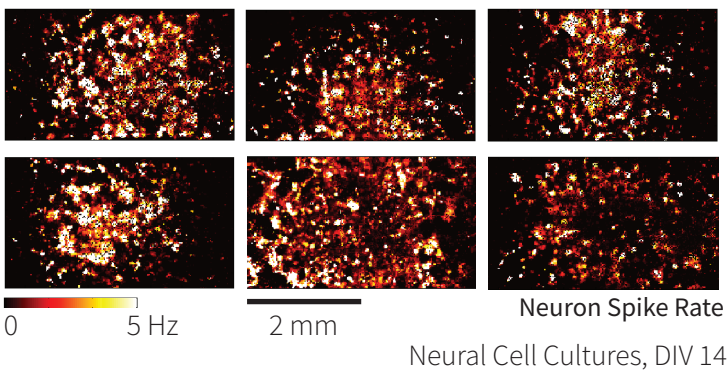
One-button interface	Open / close chamber
Status indicator	LED
Data connection	Gigabit Ethernet
Dimensions	40 × 16 × 12 cm <sup>3</sup>

#### Built-in Incubator

Controllable temperature	Yes
Temp. accuracy	0.5°C
CO <sub>2</sub> control	Yes
Input gas pressure	0.1-0.15 MPa

### Assays

#### Whole Sample Electrical Imaging



### MaxTwo Multi-Well Plate



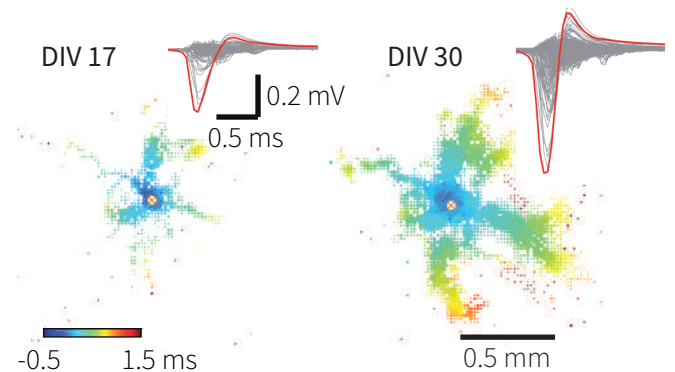
#### Recording and Stimulation Channels Per Well

Adjustable gain	Yes
No. of recording channels	1,020
Sampling rate	10 kHz / channel
Resolution	10 bit
No. of stim. units	32
Stimulation mode	Voltage

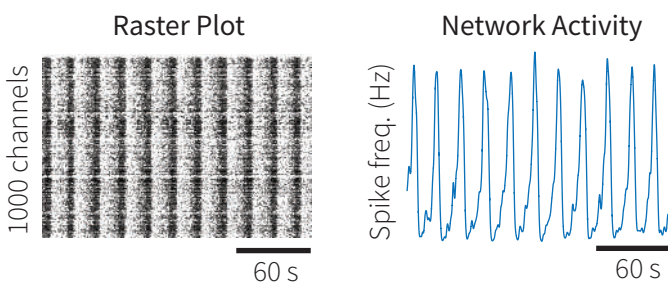
#### Microelectrodes and Sensor Area

Total no. of electrodes	26,400
El. center-to-center dist.	17.5 μm
Electrode type	Platinum
Electrode size	12 × 8.75 μm <sup>2</sup>
Active sensing area	3.85 × 2.10 mm <sup>2</sup>

#### Axonal Conduction Velocity Tracking



#### Connectivity and Synchronicity Extraction



#### MaxWell Biosystems AG

🐦 @mxwbio 📍 Switzerland

#### Disclaimer

The contents of this document are provided by MaxWell Biosystems (MxW), 'as is'. MxW makes no representations nor warranties with respect to the accuracy or completeness of the contents of this publication and reserves the right to make changes to the specification at any time without notice. All trademarks are the property of their respective owners.